

REVISIONS AND ISSUES	DATA
LOCATIONS OF REVISIONS ARE INDICATED ON DWG. AS	
REVISIONS	29.01.03

NOTE:

Il presente elaborato/diagramma/documento è di esclusiva proprietà dello STUDIO TRODS e non potrà essere ridato o/o riprodotto o/o pubblicato in tutto o in parte senza permesso scritto dello STUDIO TRODS. Il presente elaborato/diagramma/documento è stato creato con il software AutoCAD 2004/41 e AutoCAD LT 2004/41 e 2009. I diritti di copyright sono riservati. Tutti i diritti sono riservati e non possono essere trasferiti o ceduti a terzi senza permesso scritto dello STUDIO TRODS.

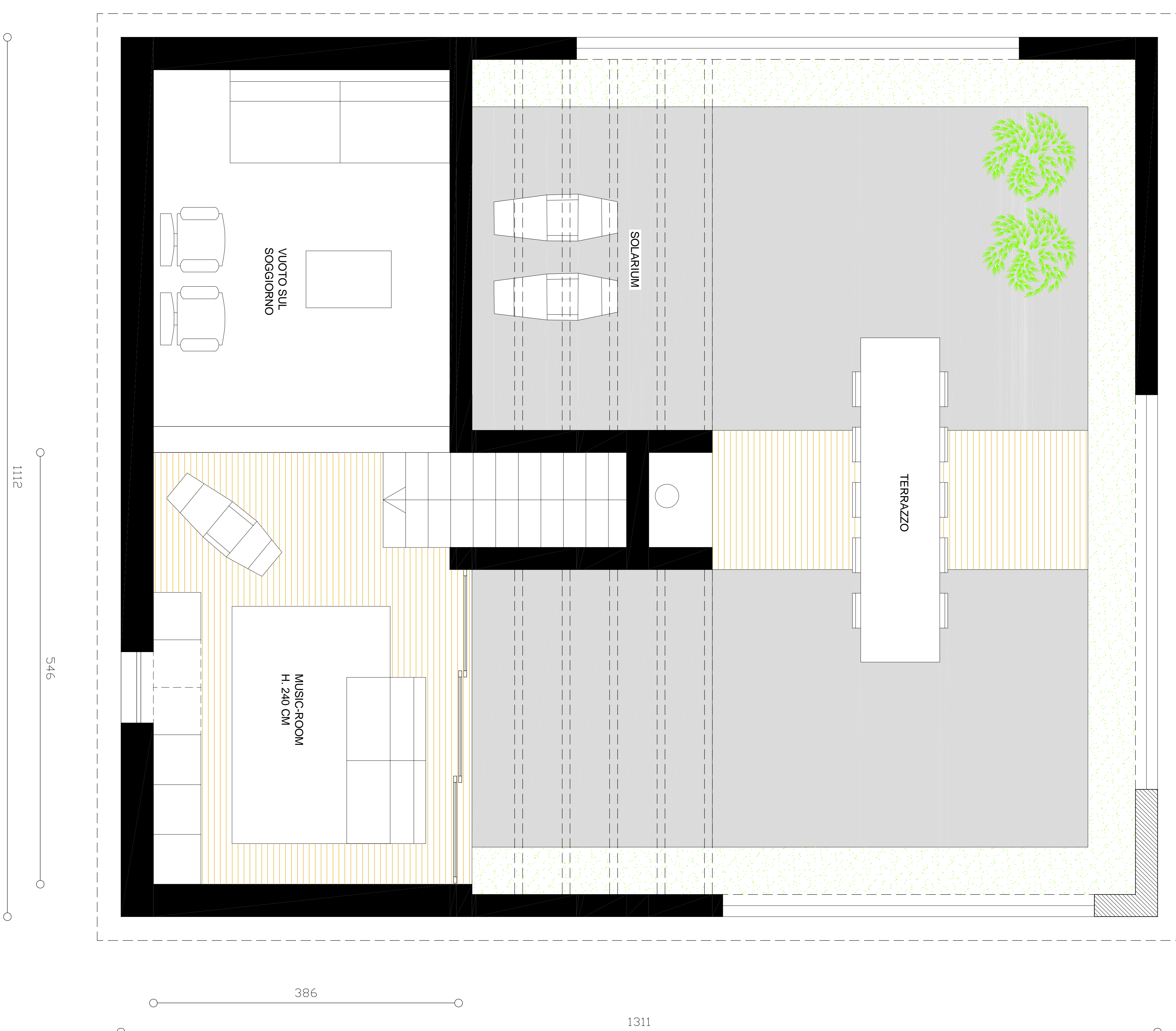
LEGENDA:

COMMITTENTE: SIG. RI	TITOLO: DISEGNO MASTER PLAN EDIFICIO RESIDENZIALE PIANO PRIMO E SECONDO
DATA: SETTEMBRE 03	PROGETTO N.:
DISEGNATO DA:	NOME DIS.:
APPROVATO DA:	SCALA: 1:50
	DISEGNO N.:

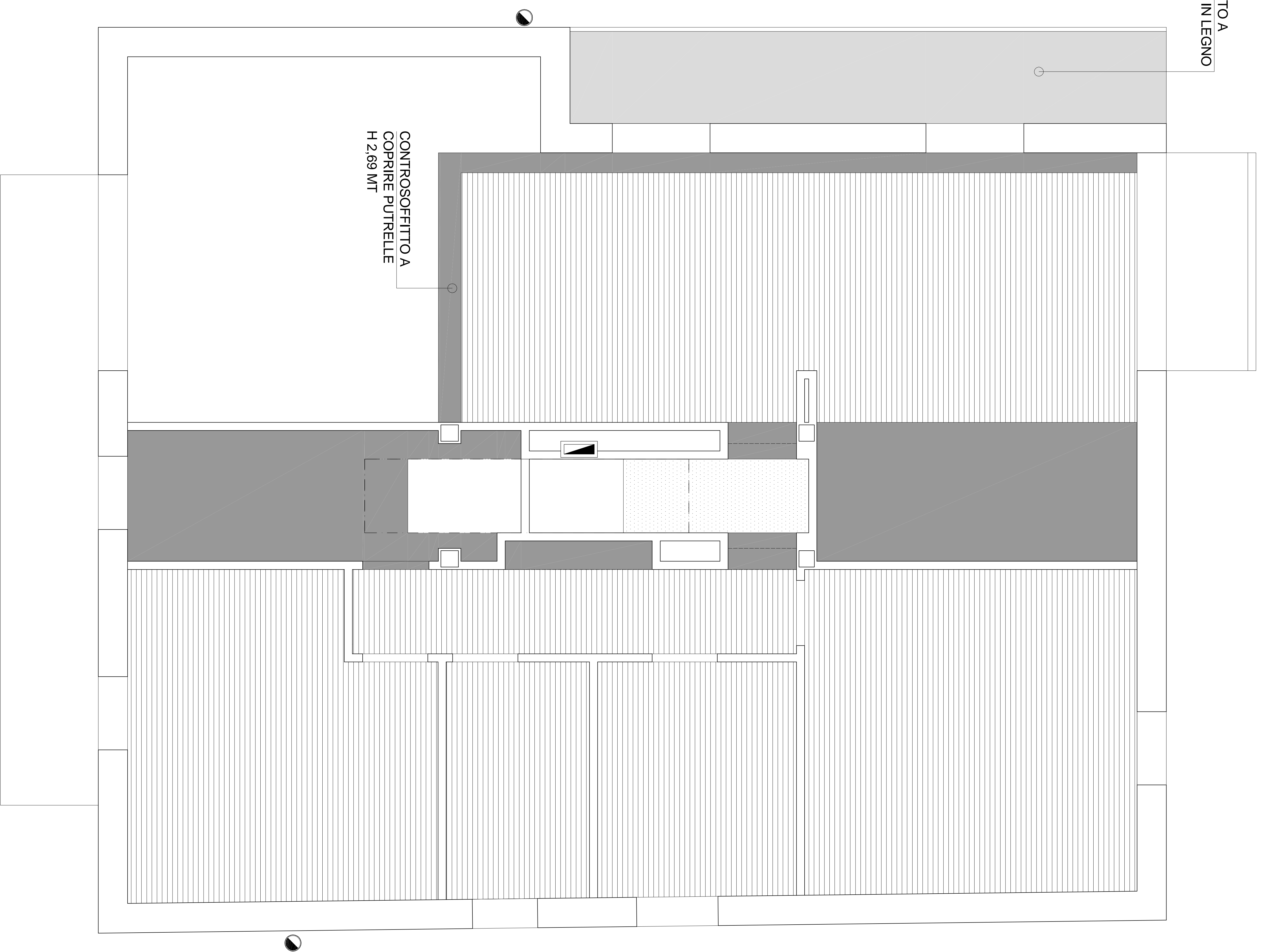
PIANTA PIANO PRIMO



PIANTA PIANO SECONDO



CONTROSOFFITTO A  
COPRIRE TRAVI IN LEGNO



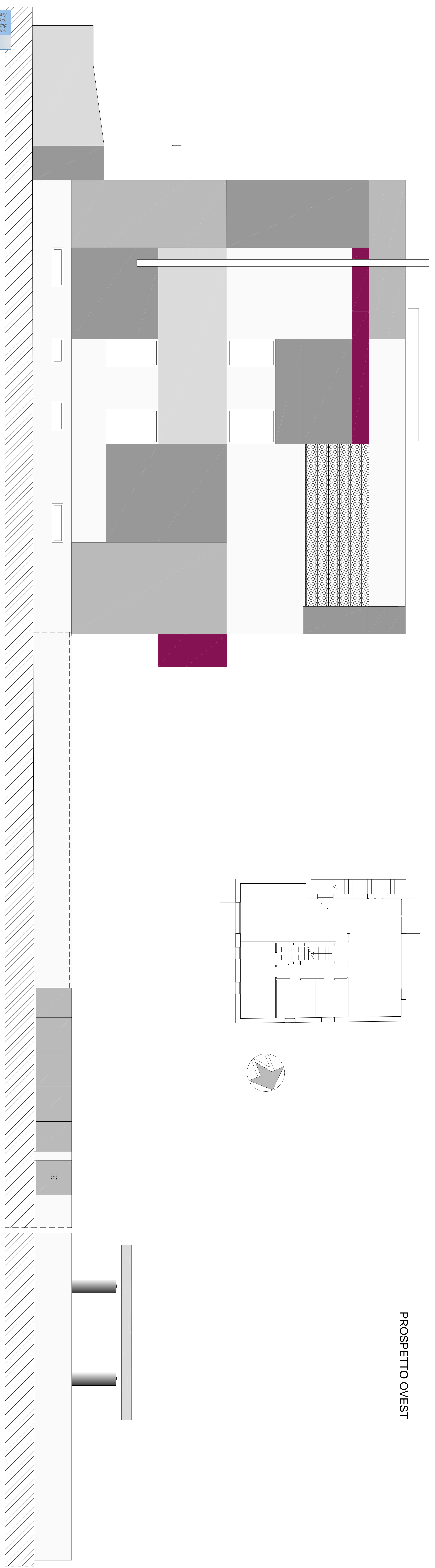
### 3° IMPALCATO

CONTROSOFFITTO  
SOTTO LUCERNARI  
H 5,38 MT

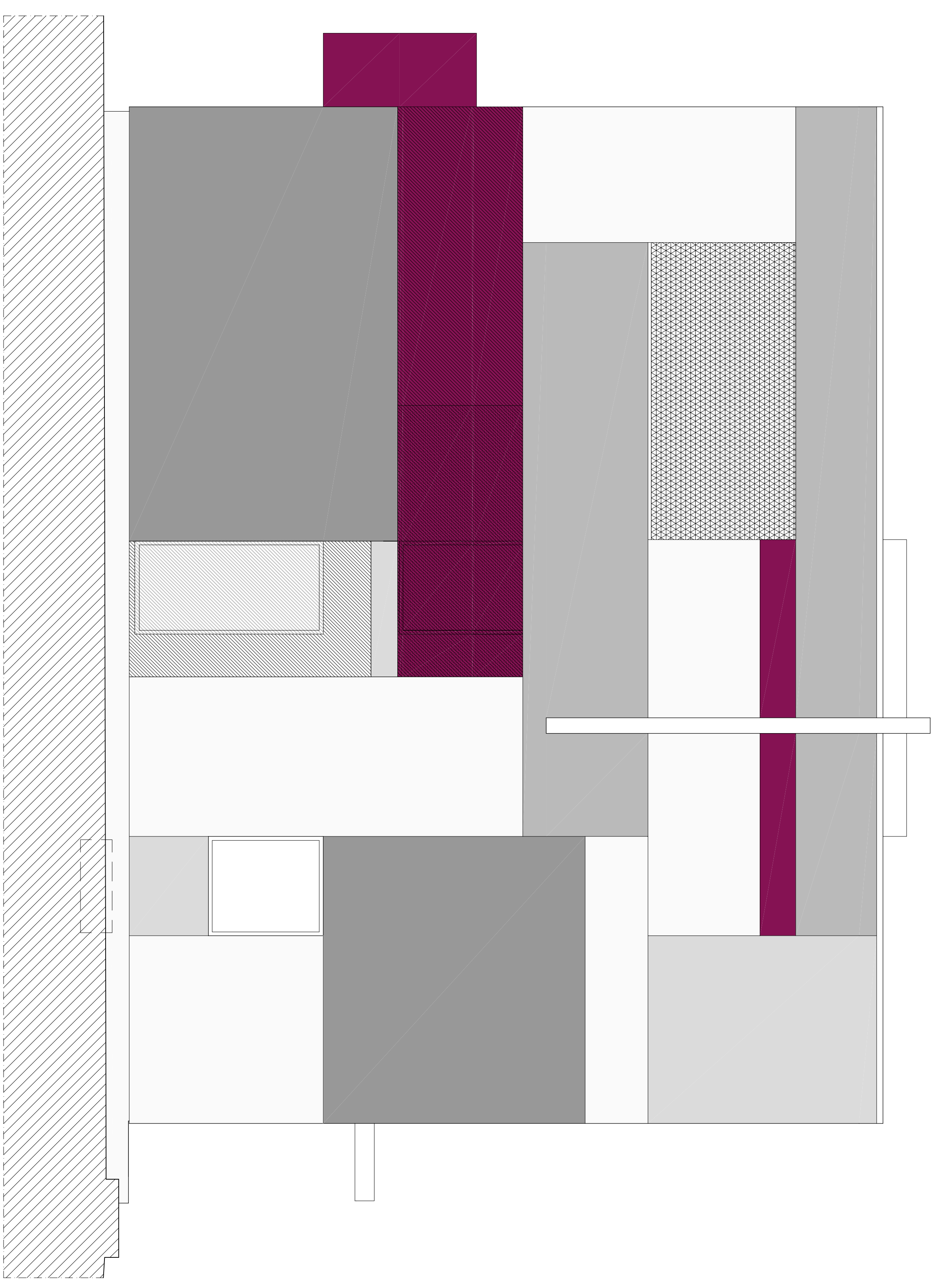


### 4° IMPALCATO

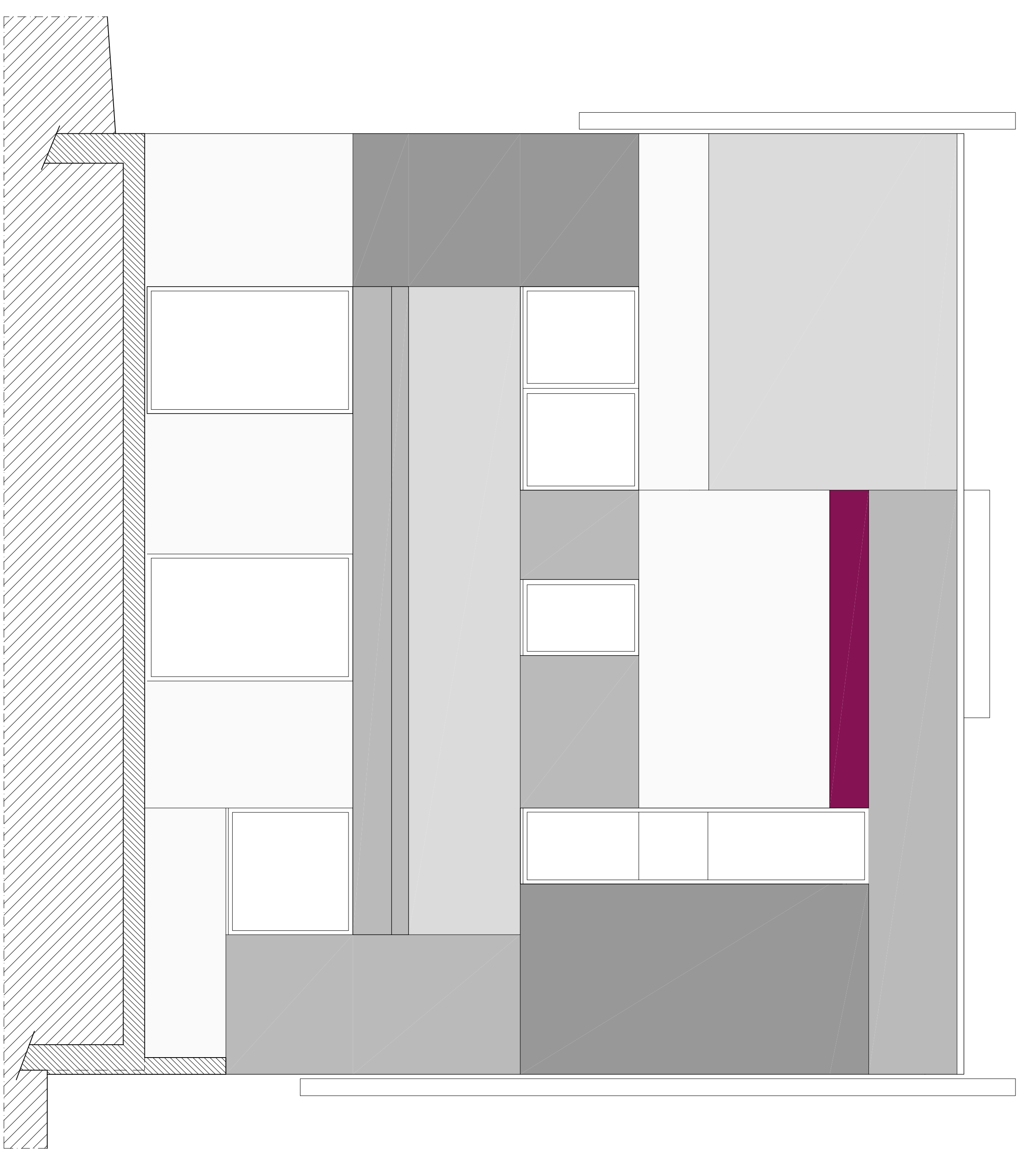
PROSPETTO NORD



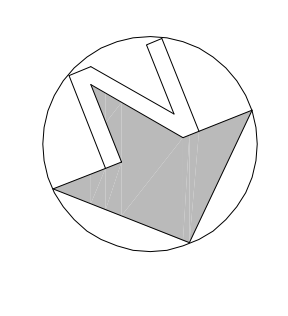
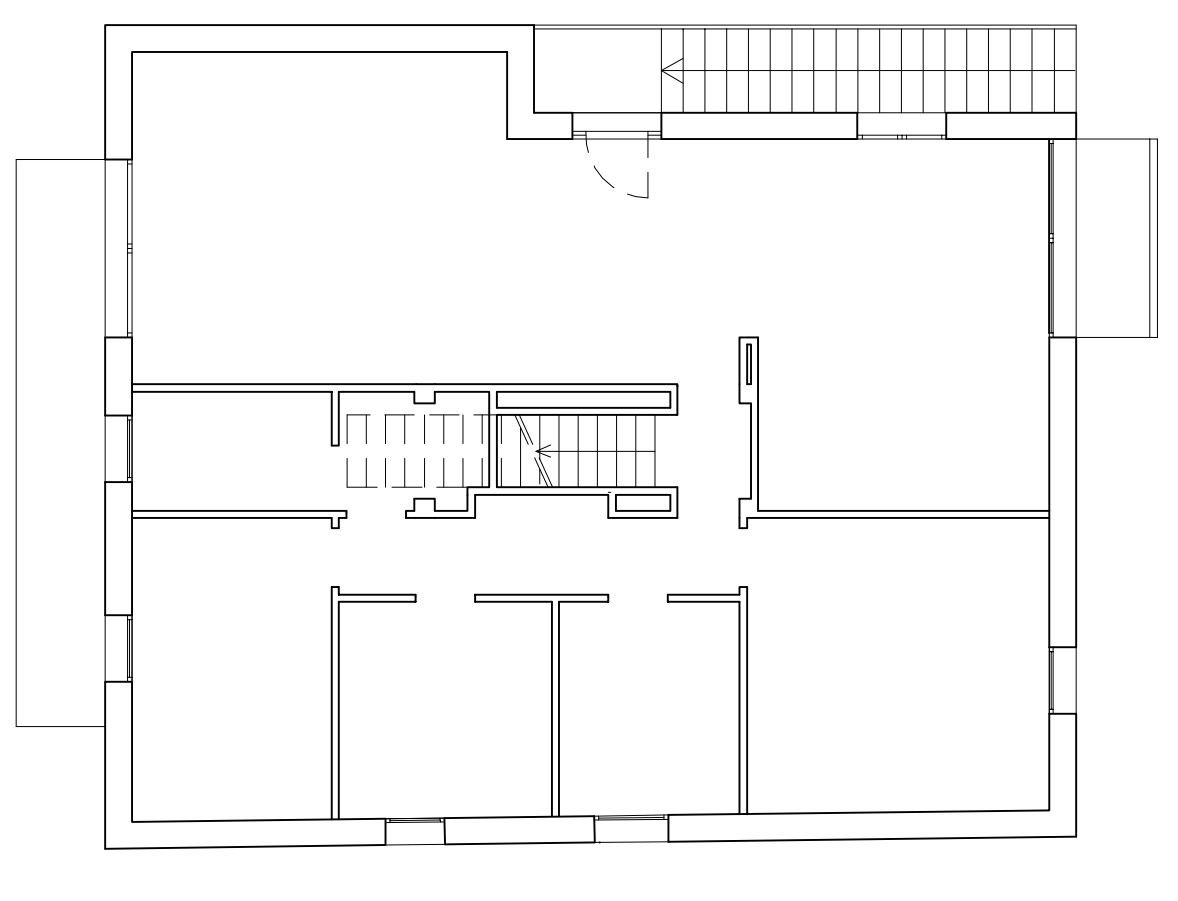
PROSPETTO SUD



PROSPETTO EST



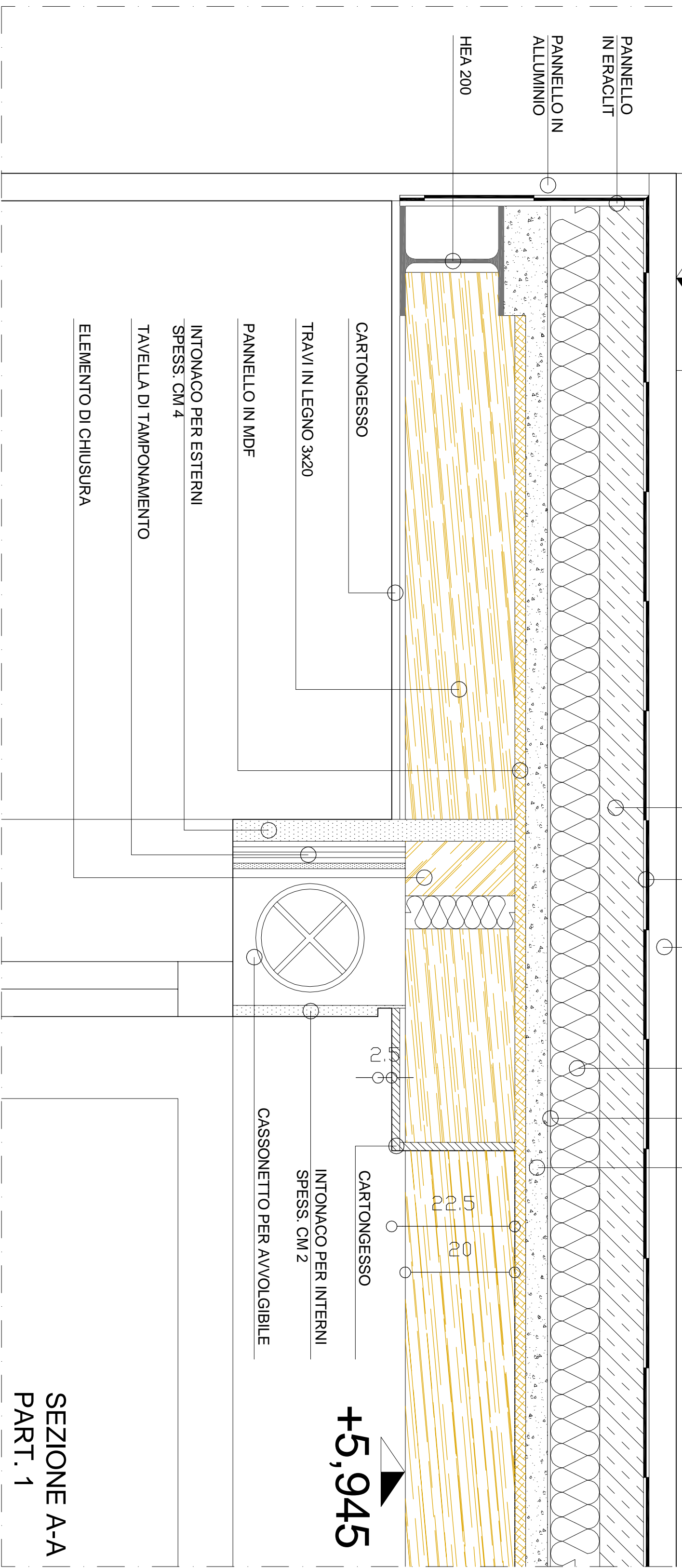
PROSPETTO OVEST



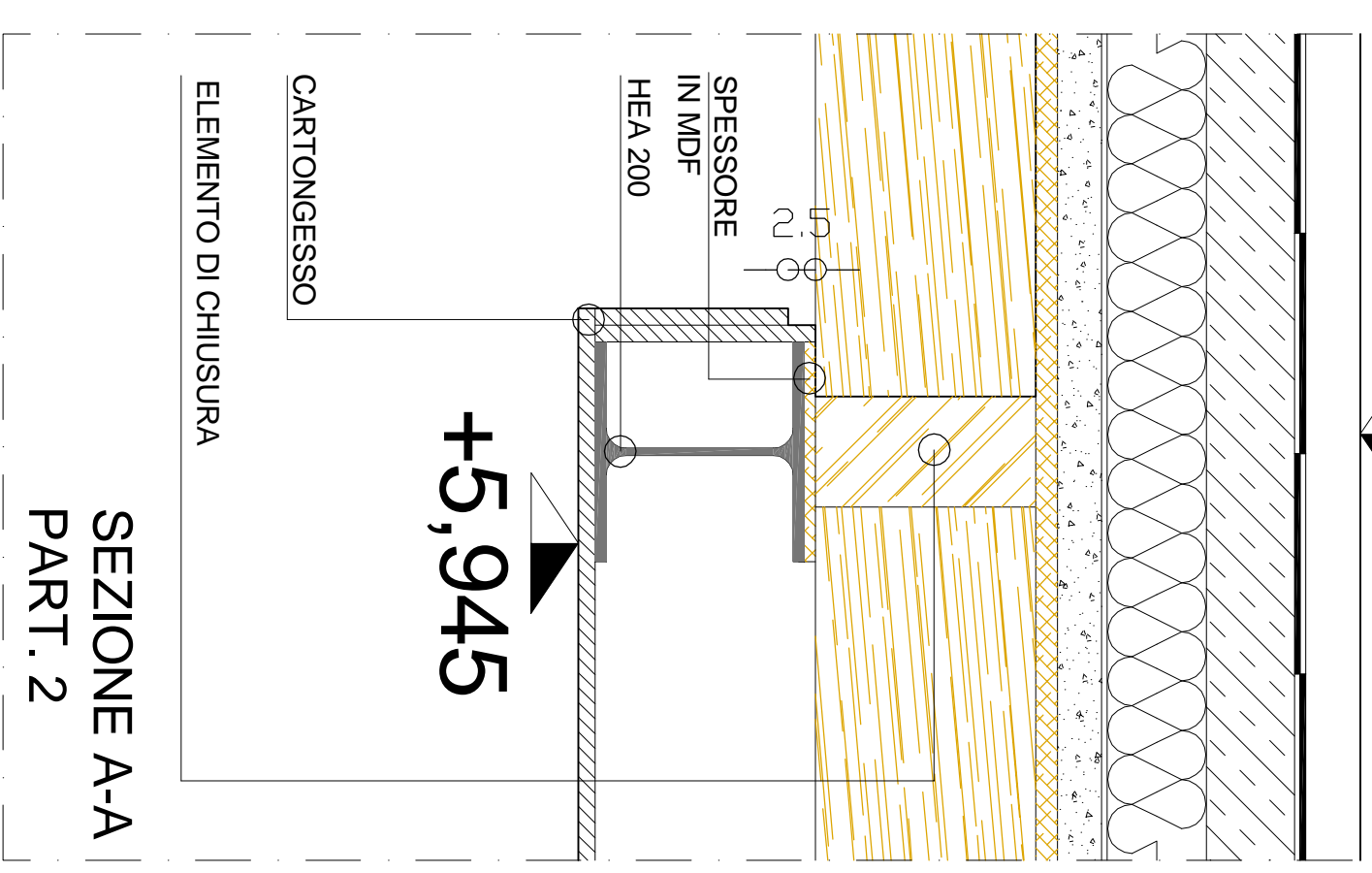
+6,44

PAVIMENTAZIONE ESTERNA CM 5  
DOPPIA GUAINA ELASTOMERICA  
SOTTOFONDO IN C.S. ALLEGGERITO  
CON PENDENZA 2 %

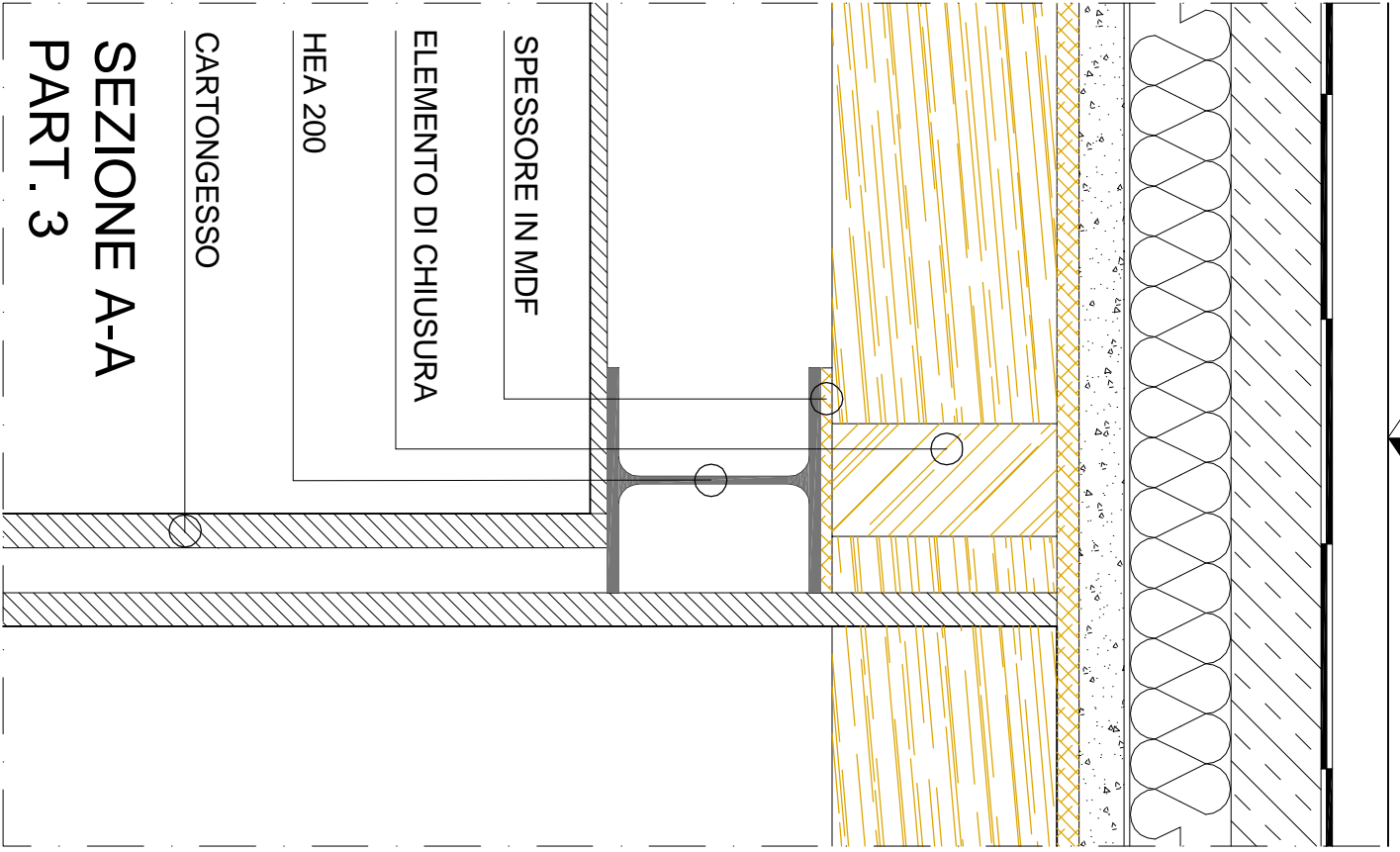
MATERASSINO TERMOISOLANTE  
TIPO STYRODUR, SPESSORE CM 9  
BARRIERA AL VAPORE  
CAPPA IN C.A.



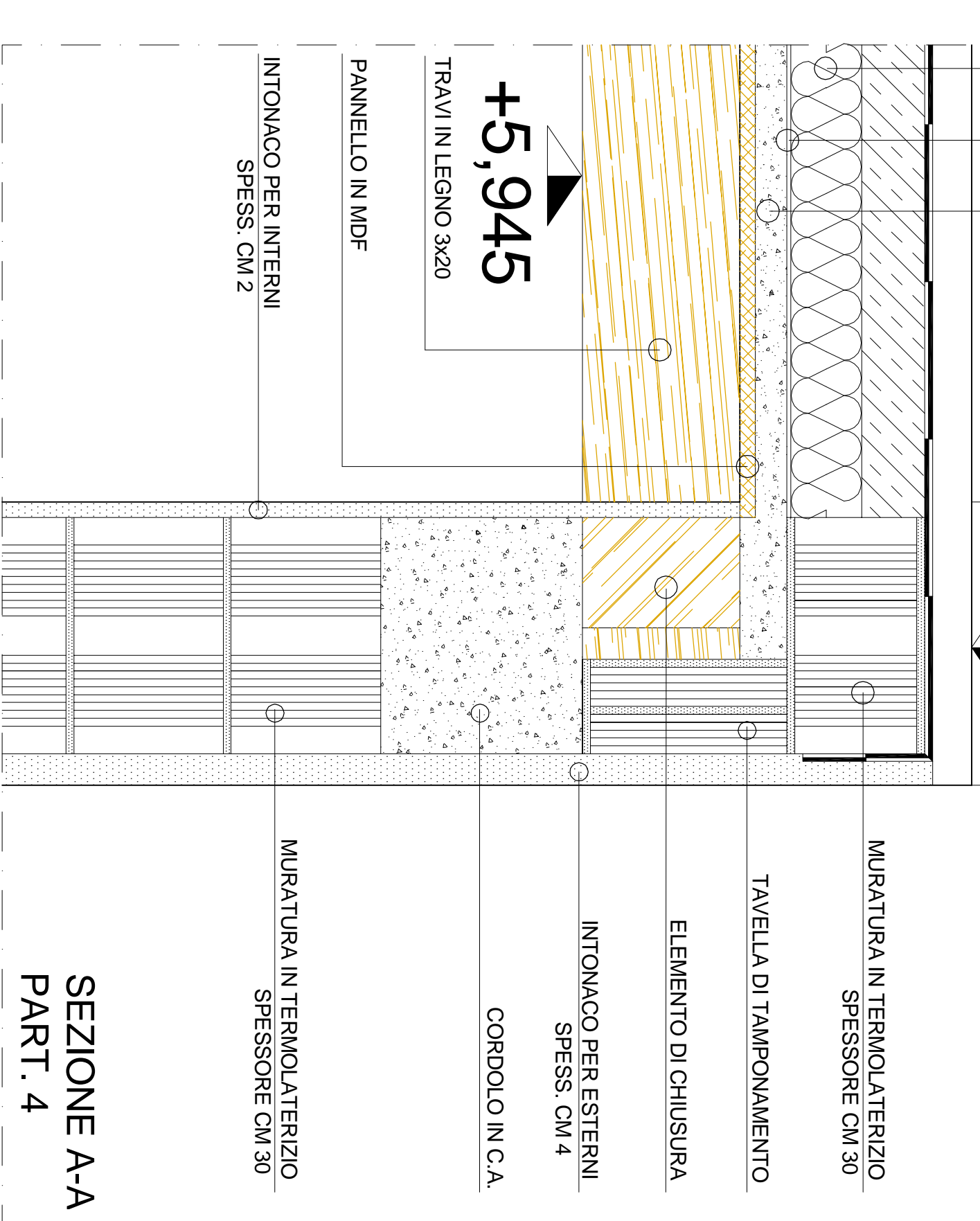
+6,44



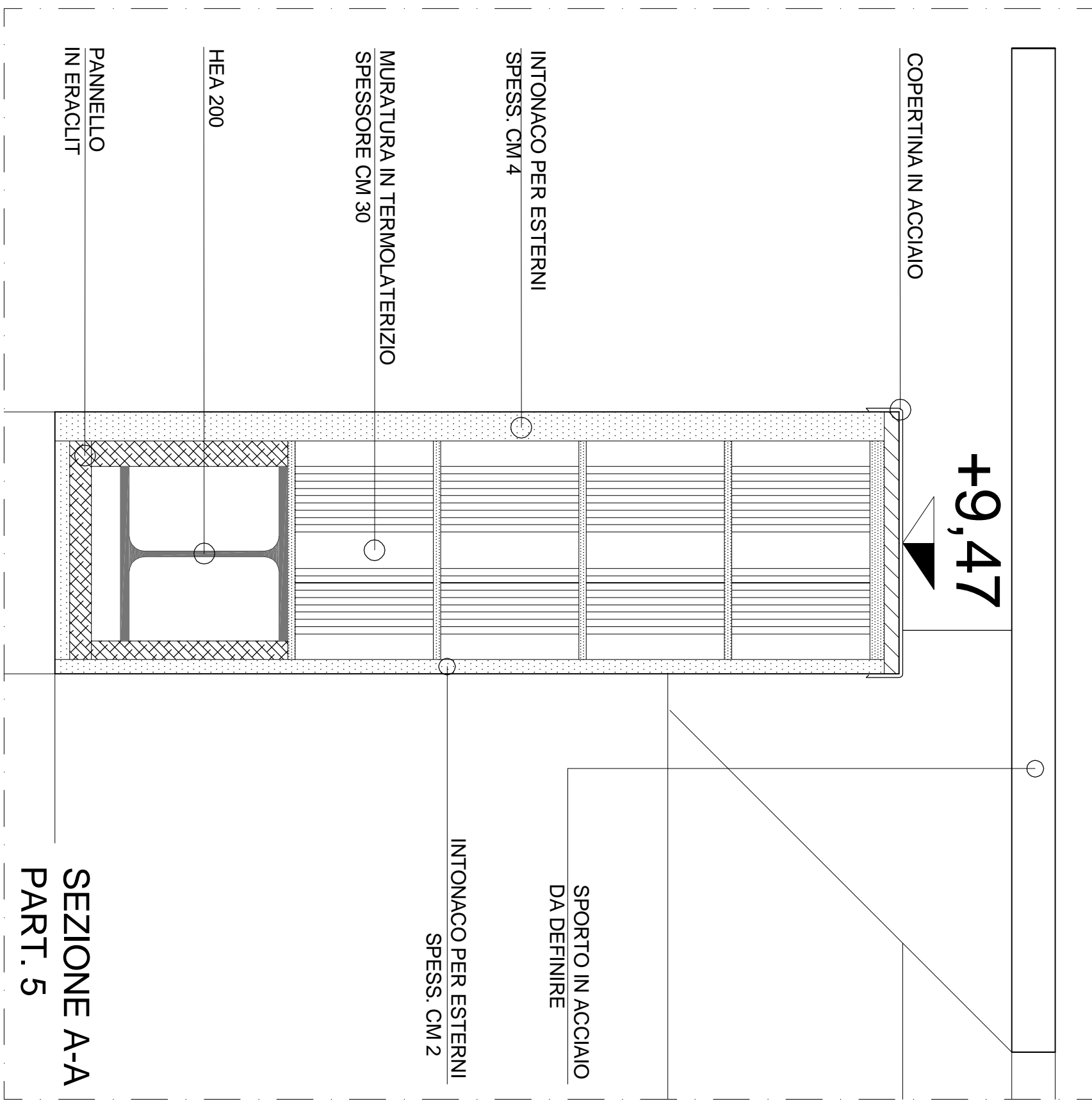
+6,44



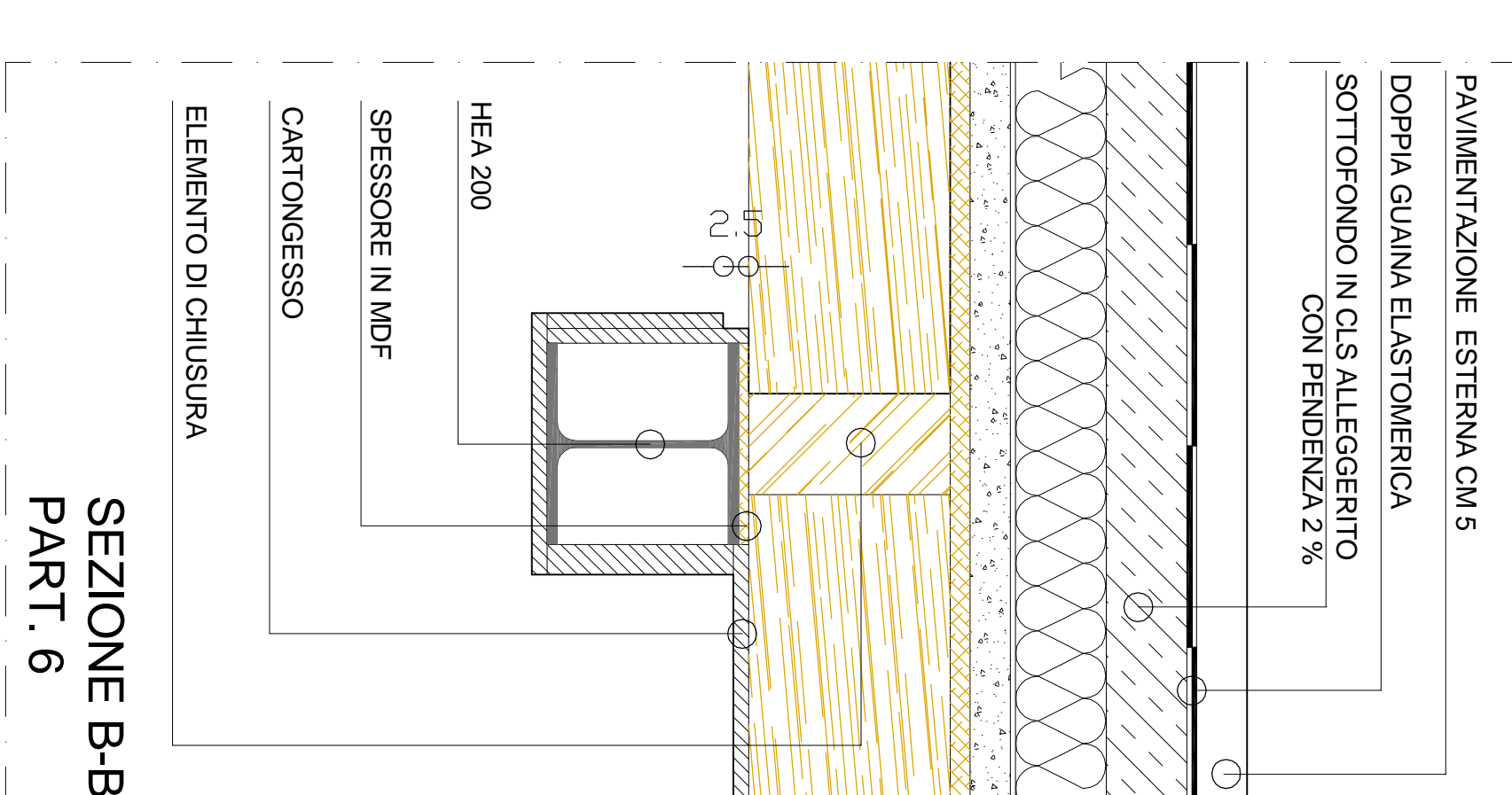
+6,44



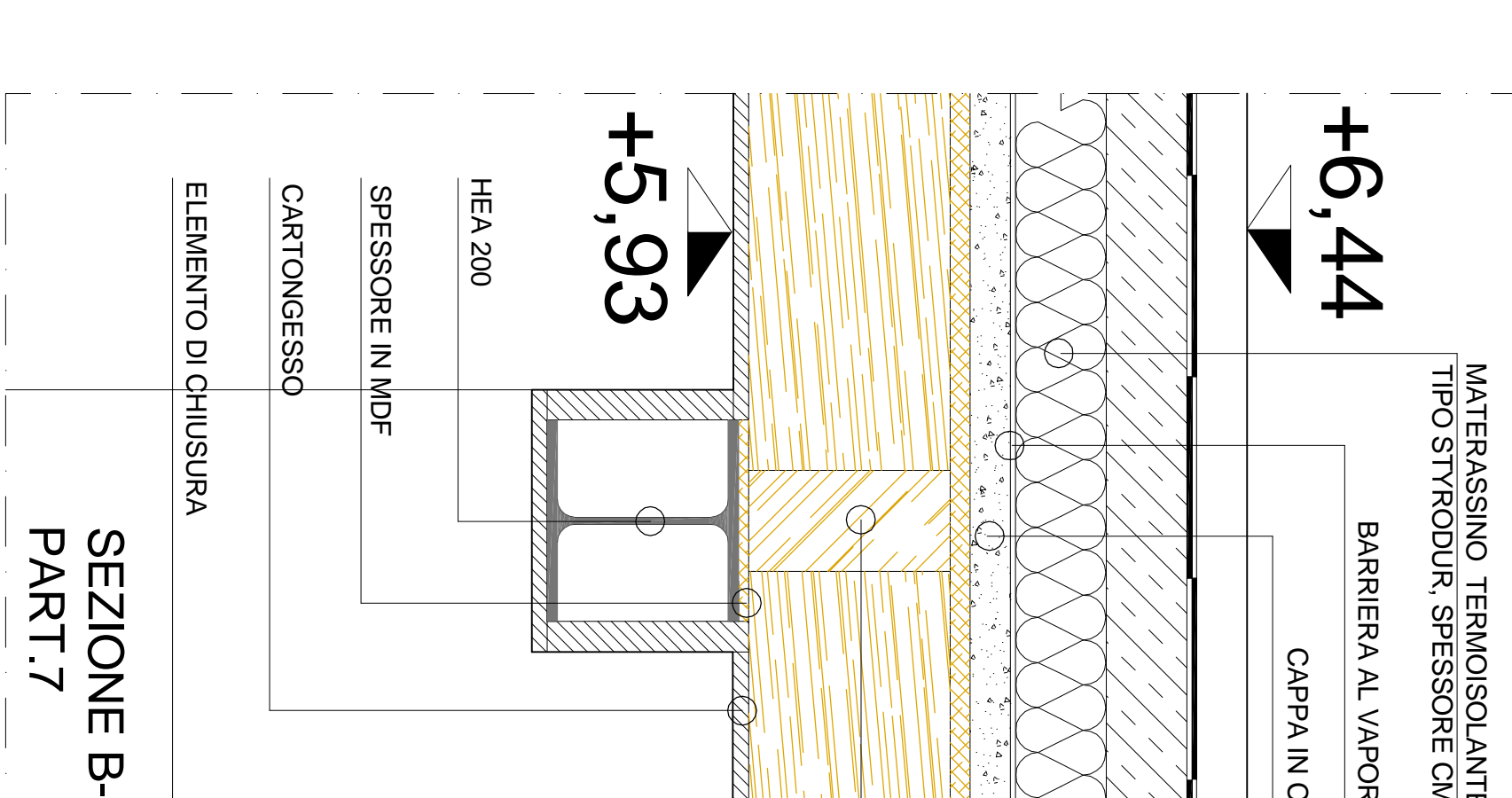
+9,47



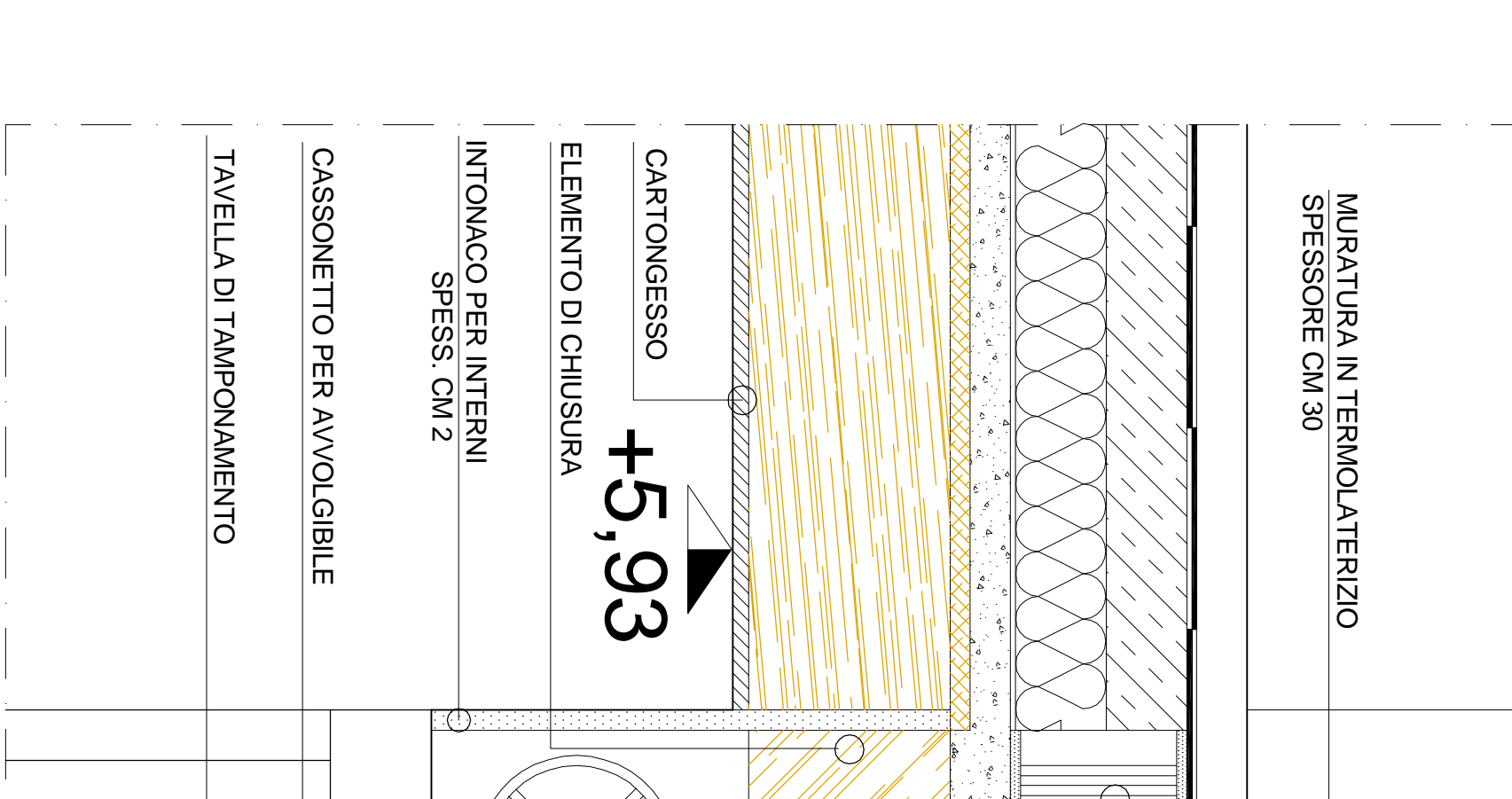
+6,44



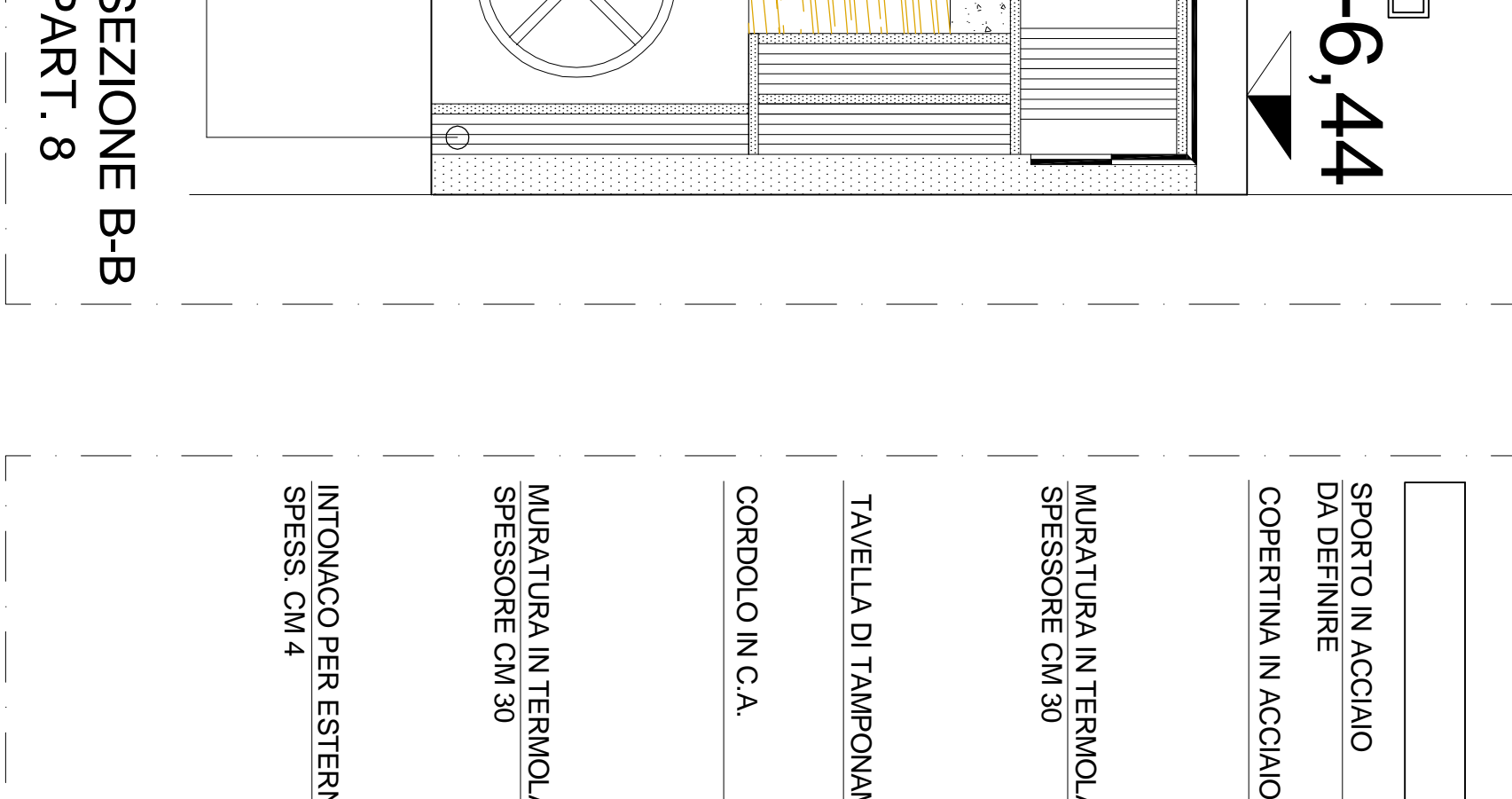
+6,44



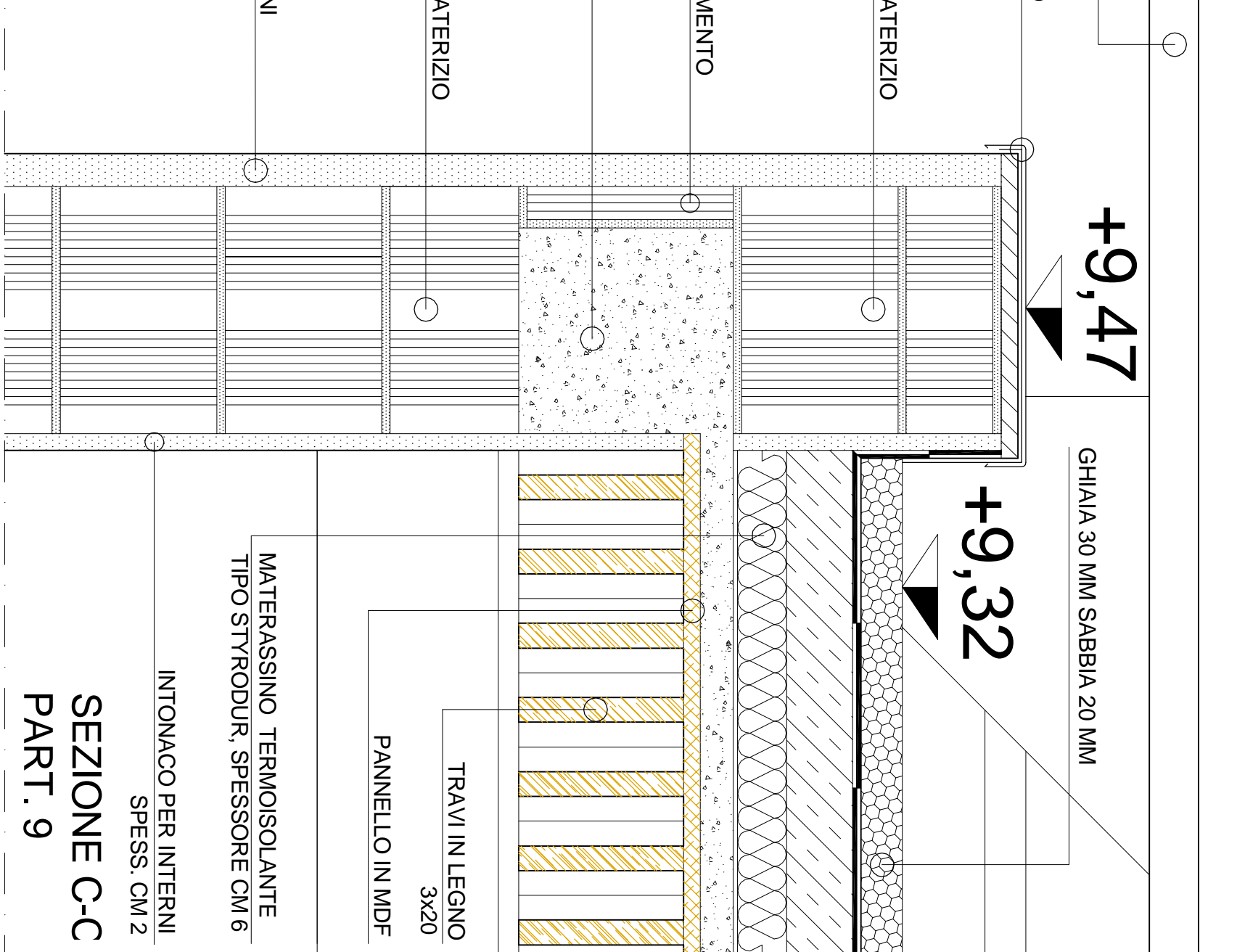
+6,44



+6,44



+9,32



SEZIONE A-A  
PART. 5

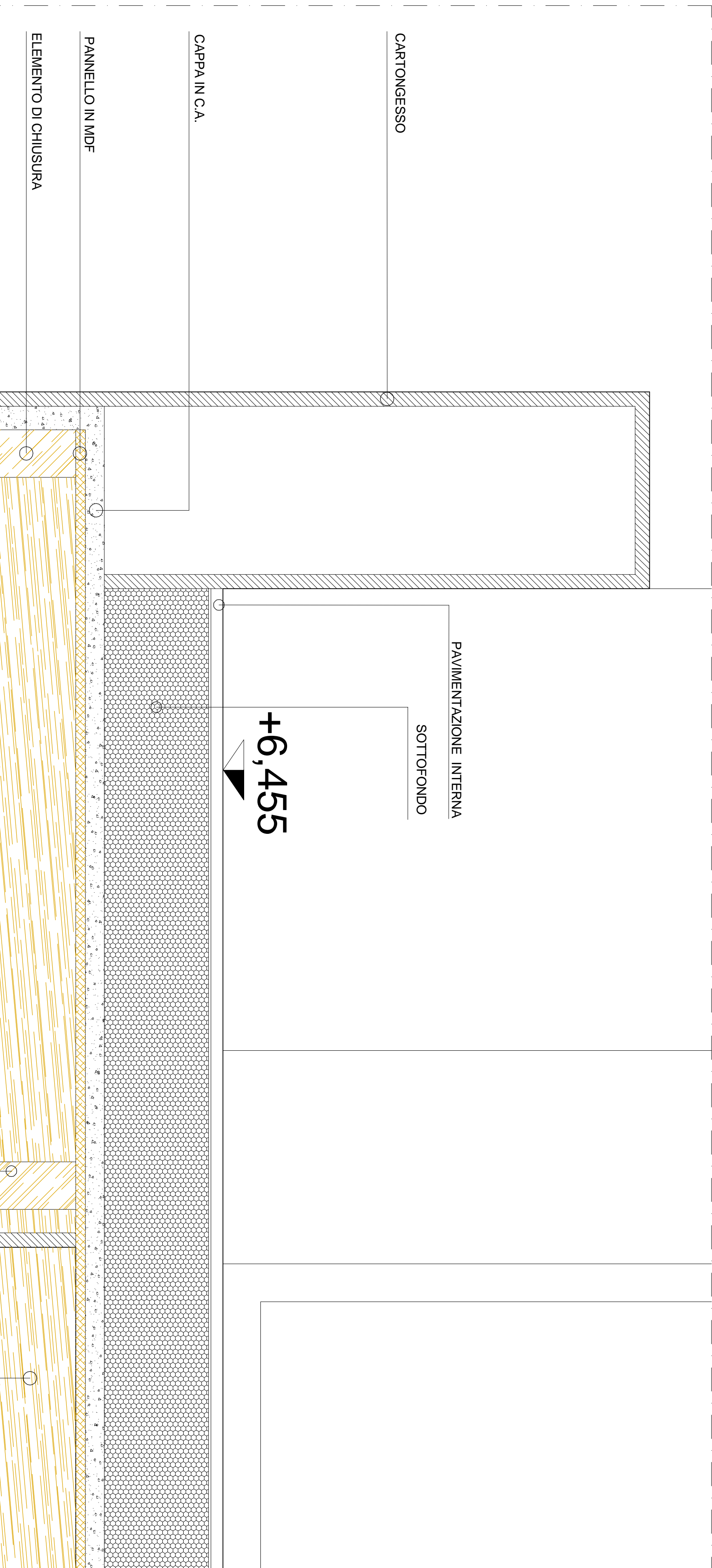
SEZIONE B-B  
PART. 6

SEZIONE B-B  
PART. 7

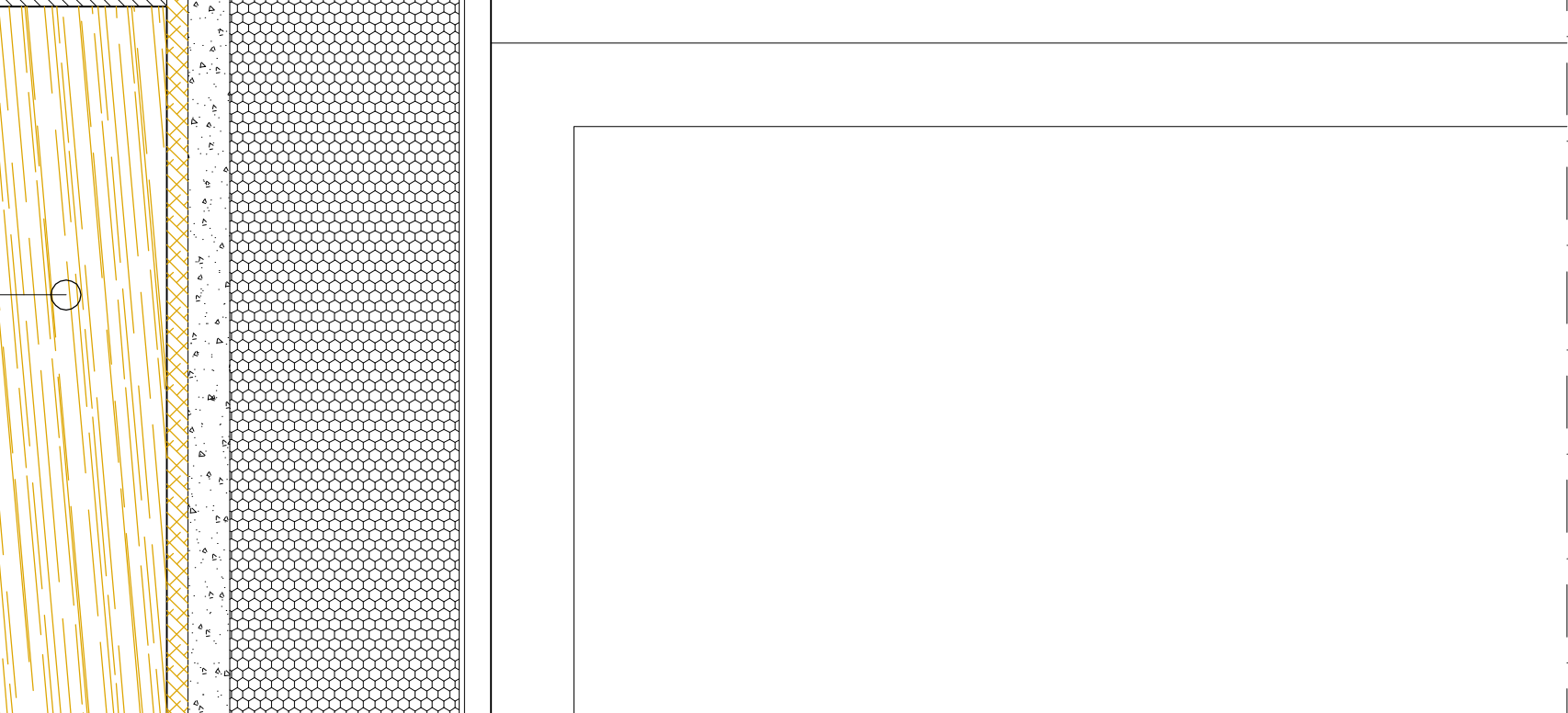
SEZIONE B-B  
PART. 8

SEZIONE C-C  
PART. 9

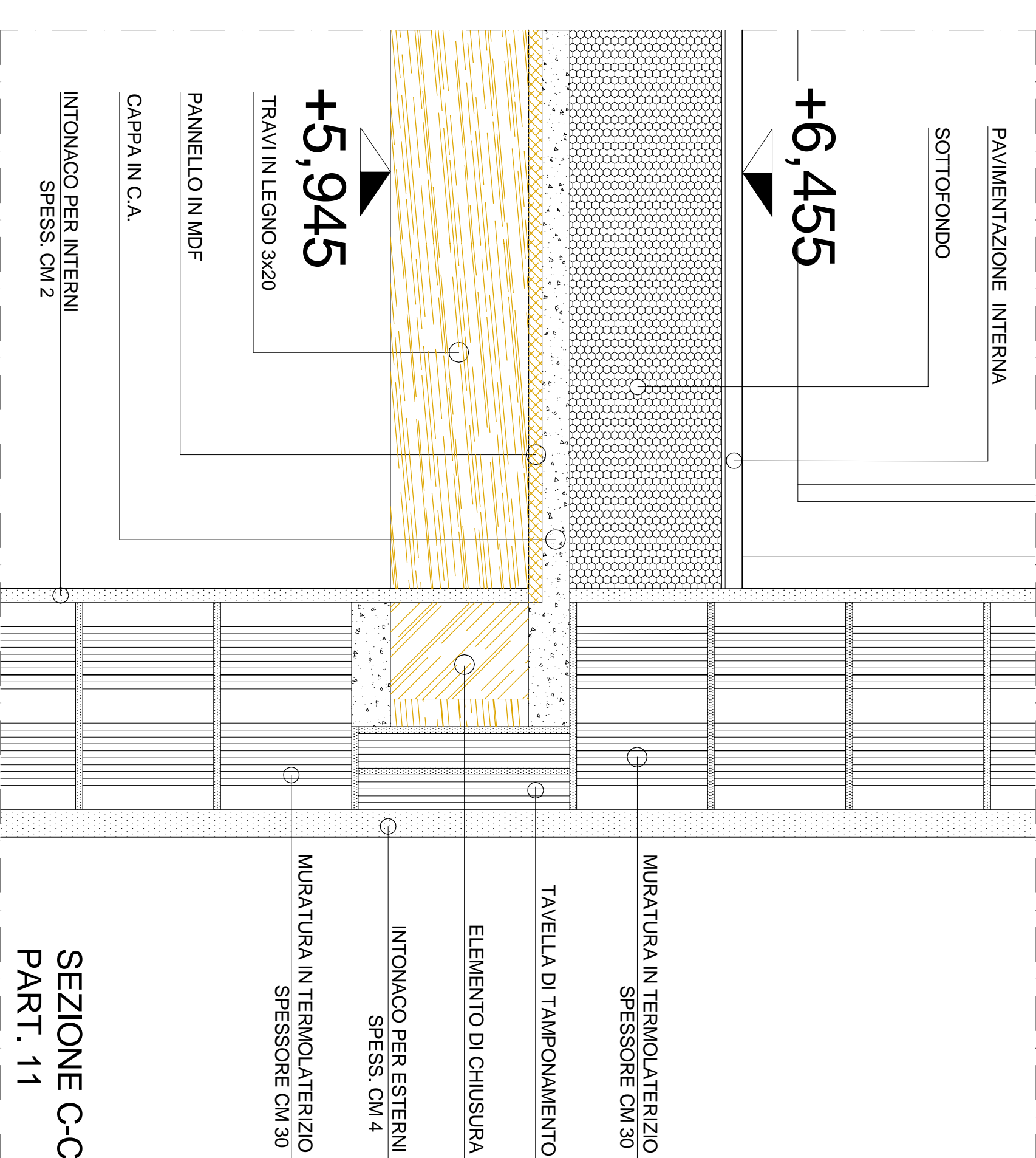
+6,455



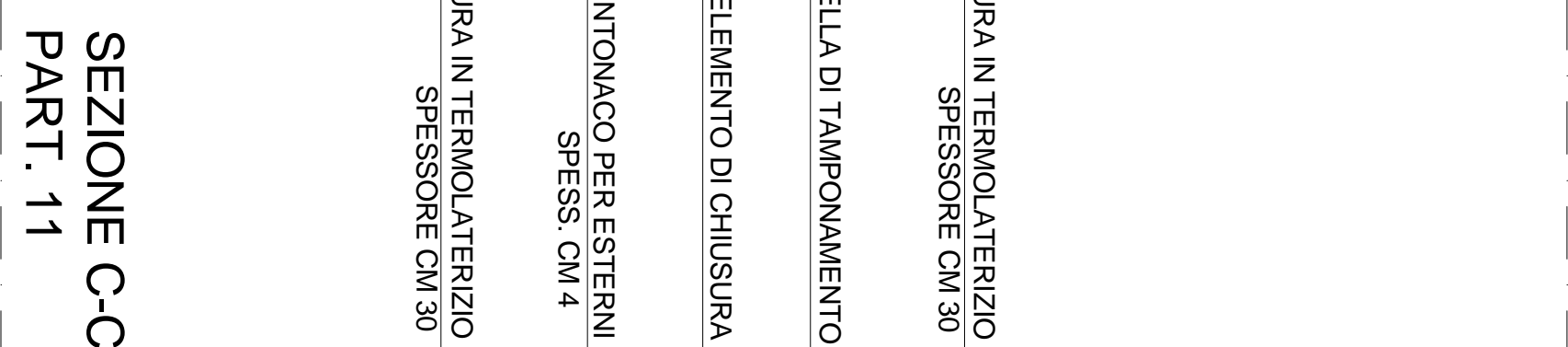
+5,945



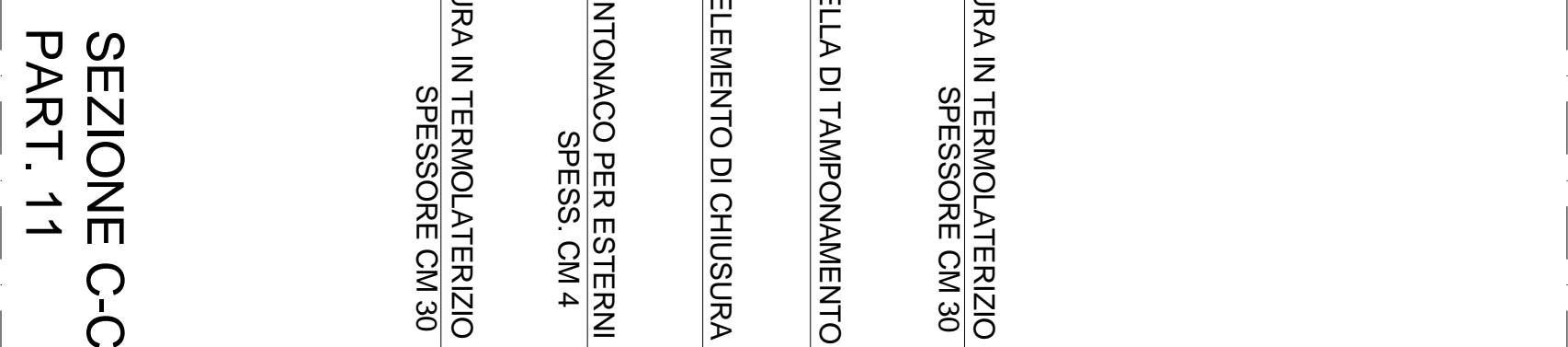
+6,455



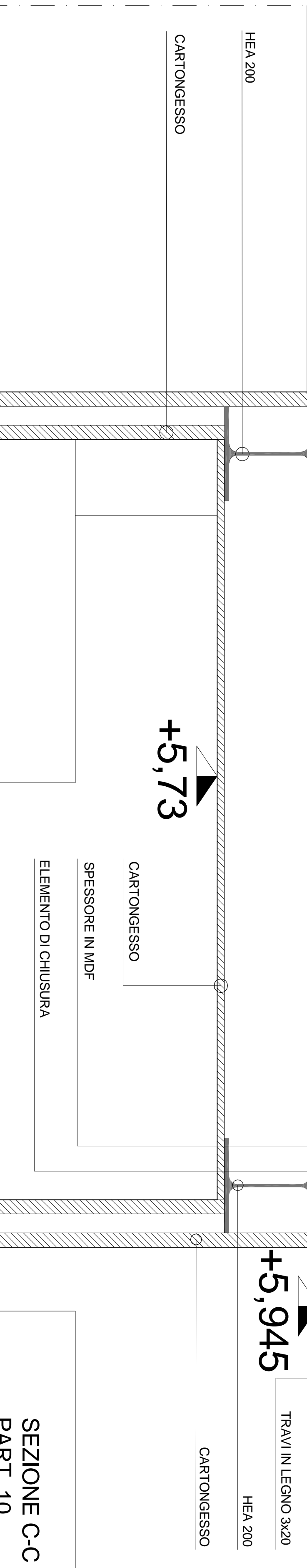
+5,945



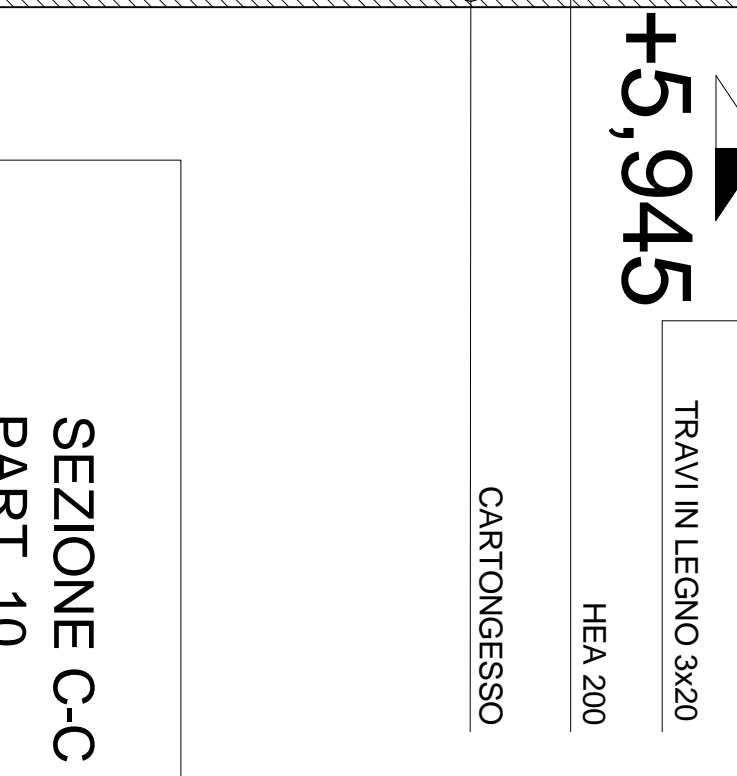
+5,945



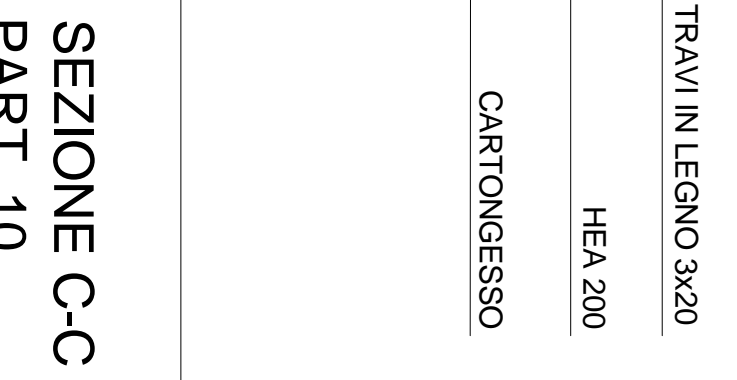
+5,73



+5,945



+5,945



N.B. I PARTICOLARI COSTRUTTIVI DELLA PRESENTE  
TAVOLA FANNO RIFERIMENTO ALLE SEZIONI  
A-A-B-B-C-C NELLA TAVOLA PE 04